

# Mapping Infrastructure and Population for Disaster Planning in Urban Areas with Remote Sensing and Census Data

Greg Yetman<sup>1</sup>

Charles Huyck<sup>2</sup>

Bob Chen<sup>1</sup>

1. CIESIN, Columbia University

2. ImageCat Inc.

Work supported by NASA-ROSES

And The World Bank



# Outline

- Remote sensing classification
- Codes for damage assessment
- Characterization of buildings through mapping schemes
- Socioeconomic data

# Data Sources: Scoping Urban Areas

- Global Rural-Urban Mapping Project-Urban Extent: SEDAC
- Gridded Population of the World (GPW): SEDAC
- Landsat: Oak Ridge National Laboratory
- Global Impervious Surface Area (IMPSA): NOAA
- Visible Infrared Imaging Radiometer Suite (VIIRS): NOAA/NASA
- LandSat-8: USGS/NASA
- Global Human Settlement Layer (GHSL): JRC

# Remote sensing “Homogenous zones”

Rural

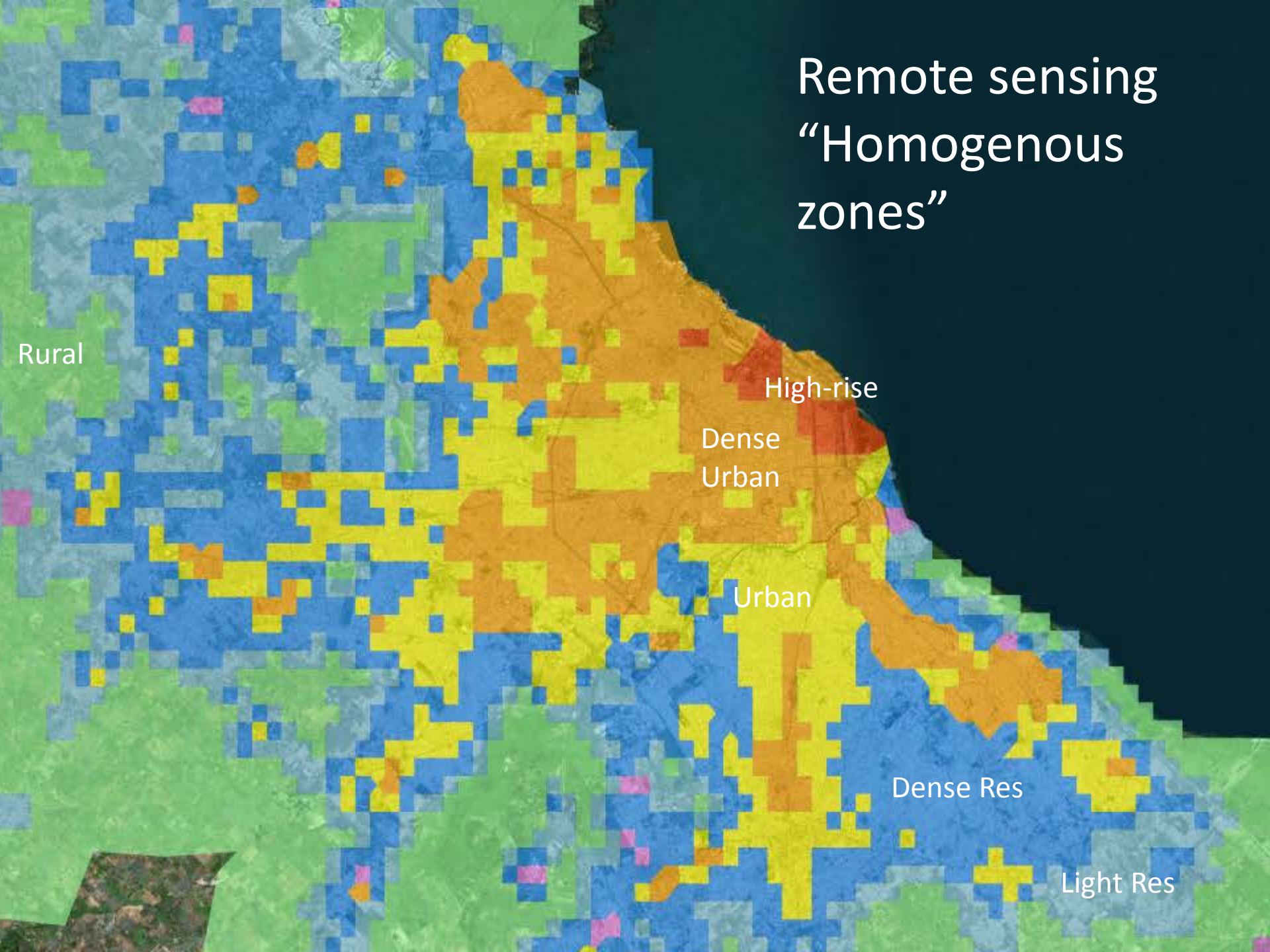
High-rise

Dense  
Urban

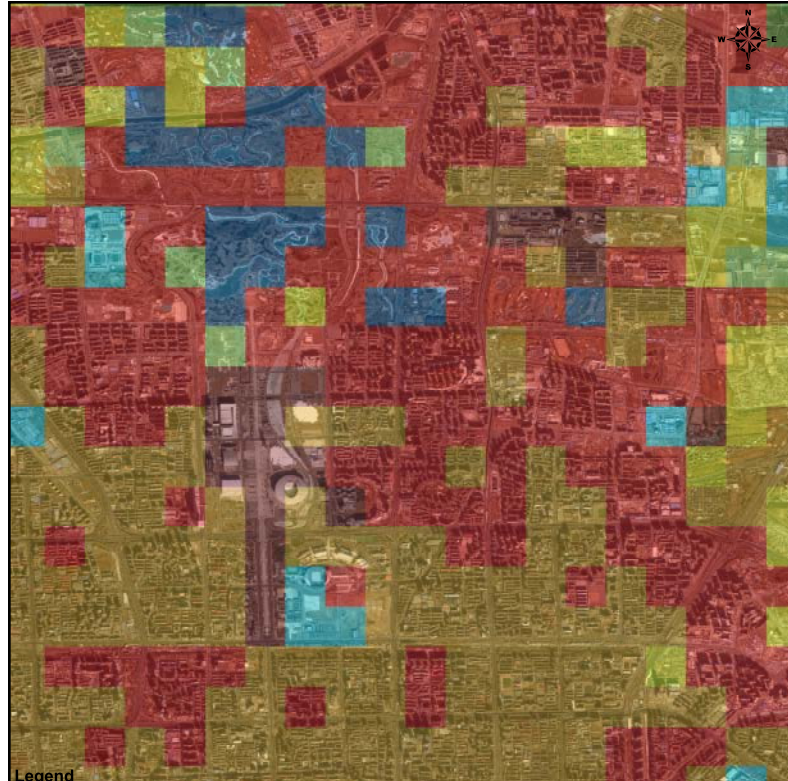
Urban

Dense Res

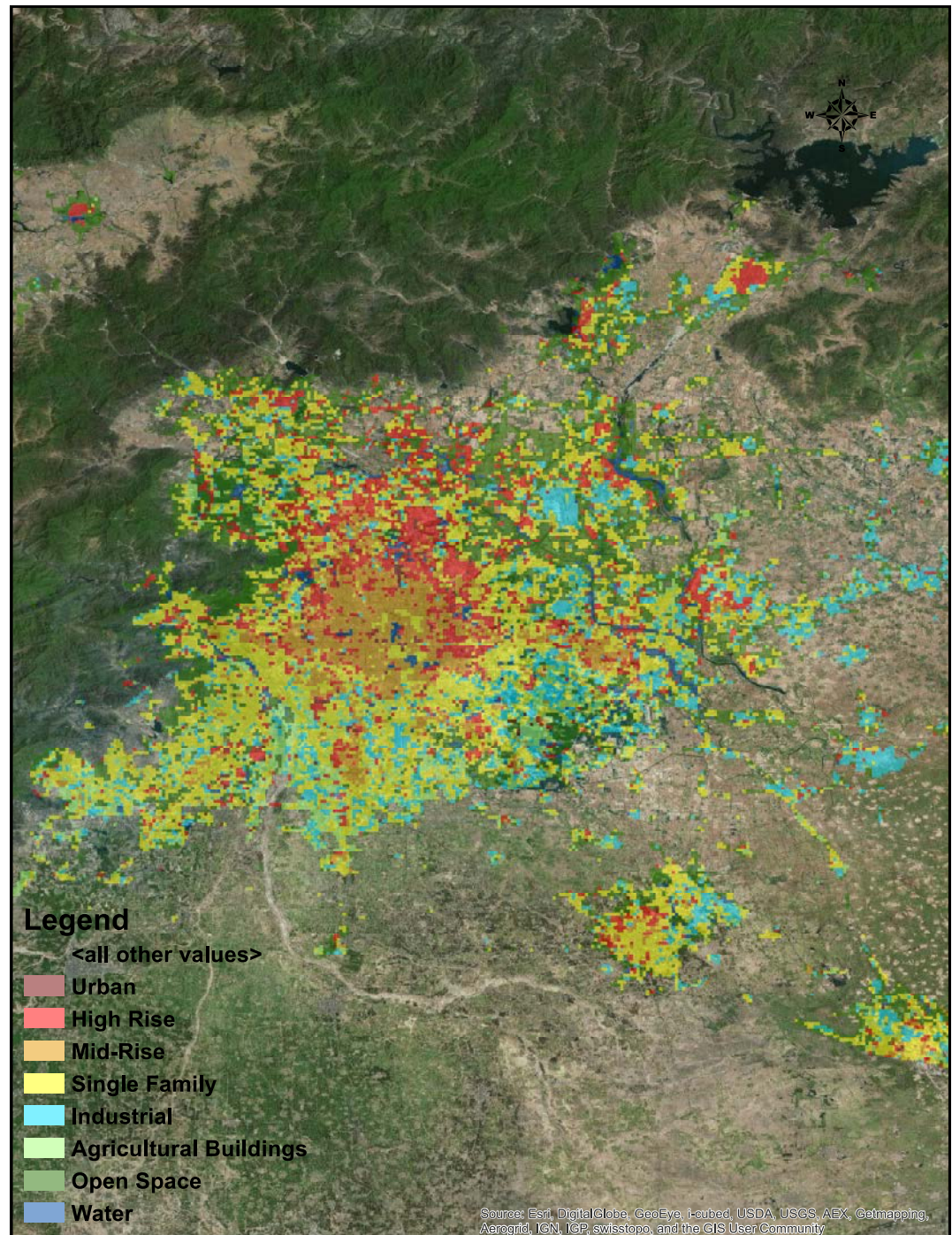
Light Res



# Beijing



Legend



## Legend

- <all other values>
- Urban
- High Rise
- Mid-Rise
- Single Family
- Industrial
- Agricultural Buildings
- Open Space
- Water

Source: Esri, DigitalGlobe, GeoEye, I-cubed, USDA, USGS, AEX, Getmapping, Aerogrid, IGN, IGP, swisstopo, and the GIS User Community

# Mapping Schemes (Indonesia example)

Building Counts and Floor Area (Sq M) by Land Use, Number of Stories and Structural Type

Zone Land Use	Basic Structural Type	Detailed Structural Type	Stories	# of Buildings	Total Sq Meters
Airport	Reinforced Concrete	Frame	1	20	15,000
Commercial	Masonry	Confined masonry	1	861	173,413
Commercial	Masonry	Confined masonry	2	270	173,616
Commercial	Masonry	Reinforced masonry	1	175	37,352
Commercial	Masonry	Unreinforced clay brick	1	2151	303,389
Commercial	Masonry	Unreinforced clay brick	2	97	35,452
Commercial	Masonry	Unreinforced, with reinforced concrete floors	2	97	41,191
Commercial	Reinforced Concrete	Frame	1	451	105,211
Commercial	Reinforced Concrete	Frame	2	296	387,201
Commercial	Reinforced Concrete	Shear wall	1	77	12,214
Commercial	Reinforced Concrete	Shear wall	2	146	57,050
Commercial	Timber/Wood	Open frame at grade	1	886	118,346
Commercial	Other	Other		171	173,692
Industrial	Masonry	Confined masonry	1	849	171,021
Industrial	Masonry	Reinforced masonry	1	849	181,263
Industrial	Reinforced Concrete	Frame	2	562	735,185
Industrial	Steel	Braced frame	1	280	134,875
Industrial	Steel	Braced frame	7	1	8,784
Industrial	Steel	Light frame (transverse-frame; longitudinal-steel rod tension-only bracing)	1	562	762,777
Industrial	Steel	Moment frame	1	280	58,204
Industrial	Steel	Moment frame	2	280	48,667



# Results\*

The screenshot displays the Spatial Inventory Data Developer (SID) software interface. The main window shows a map of a region with various exposure zones color-coded in green, blue, yellow, and orange. The 'Selected Layer' is set to 'Exposure'. On the right, there is an 'Export Exposure' panel with a text box for the save location (C:/SID/nasa\_argentina/argentina.csv) and a dropdown for the export data format (CSV data(\*.csv)).

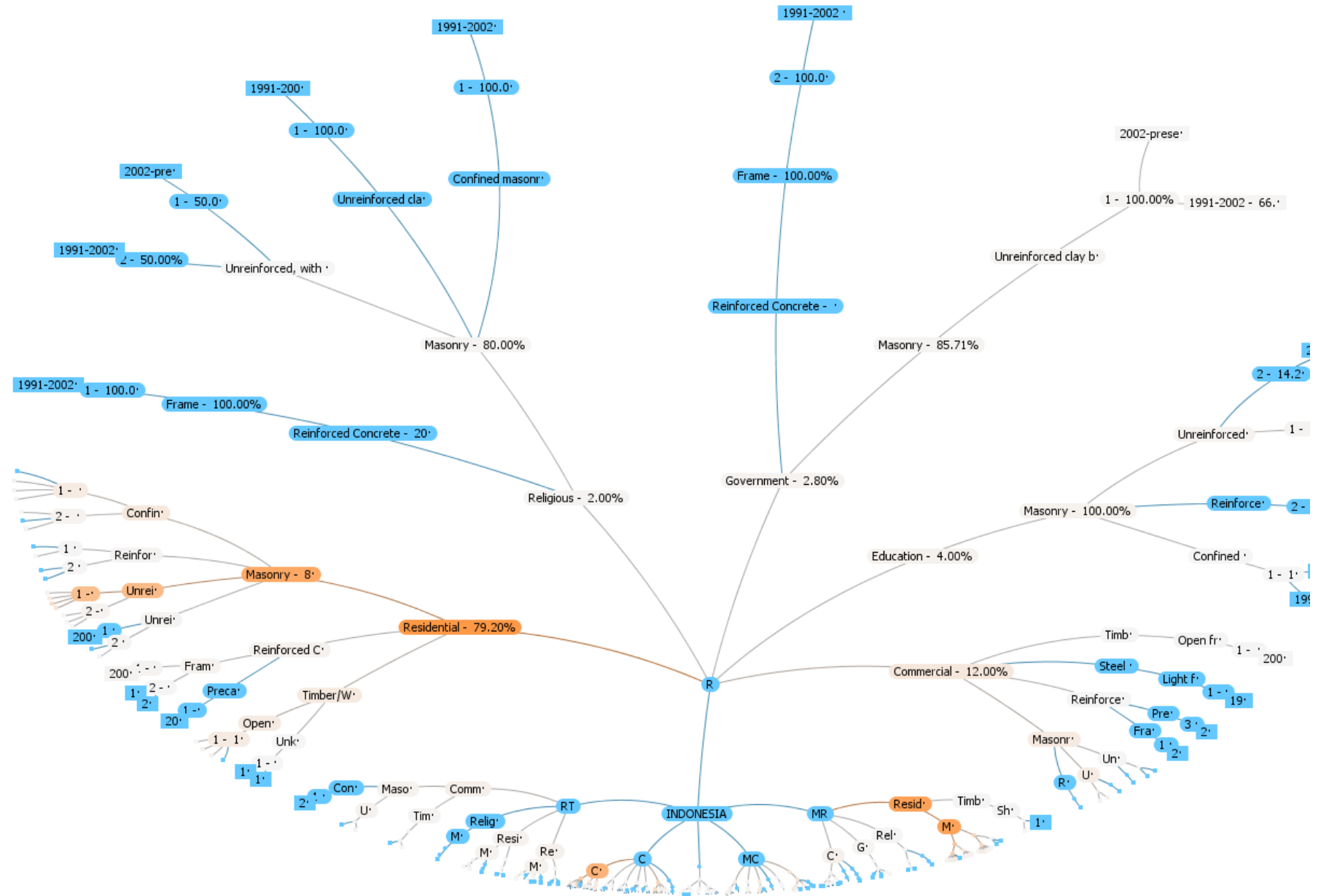
Below the map, a 'Feature Information' window is open, showing 'Detailed Information for Selected Feature'. This window contains a table with the following data:

GID	LON	LAT	TAXONOMY	ZONE	NUM_BLDGS	AREA	REPCOST
-459673652	-58.45	-34.5624999942	CR+CIP/LFINF+DNO/HBET:1,3	VH	35.288379	0.0	0.0
-459673652	-58.45	-34.5624999942	CR+CIP/LFINF+DNO/HBET:4,7	VH	172.290321	0.0	0.0
-459673652	-58.45	-34.5624999942	CR+CIP/LFM+DUC/HBET:1,3	VH	193.048191	0.0	0.0
-459673652	-58.45	-34.5624999942	CR+CIP/LFM+DUC/HBET:4,7	VH	910.084329	0.0	0.0
-459673652	-58.45	-34.5624999942	CR+CIP/LFM+DUC/HBET:8,999	VH	1654.69878	0.0	0.0
-459673652	-58.45	-34.5624999942	MR+MUN99+R5/LWAL	VH	512.54	0.0	0.0
-459673652	-58.45	-34.5624999942	S+599	VH	183.05	0.0	0.0

At the bottom of the software window, a status bar shows 'Exposure Exported' and 'Building Count: 3661'. An 'OK' button is visible in the bottom right corner.

\* Adjust mapping schemes, observations, and zones as needed, repeat

# Guarding against too many classes





# Applied Technology Council (ATC) Codes

- Categories for modeling damage from earthquakes
- Developed in the U.S.
- Some overlaps in categories

- Permanent Dwelling (single family housing)
- Permanent Dwelling (multi-family housing)
- Temporary Lodging
- Group Institutional
- Housing Retail Trade
- Wholesale Trade
- Personal and Repair Services
- Professional, Technical and Business Services
- Health Care Service Entertainment and Recreation
- Parking Heavy Fabrication and Assembly
- Light Fabrication and Assembly
- Food and Drugs Processing
- Chemicals Processing
- Metal and Minerals Processing
- High Technology
- Construction
- Petroleum
- Agriculture
- Mining
- Religion and Nonprofit
- General Services
- Emergency Response Services
- Education
- Highway
- Railroad

- Air
- Sea/Water
- Electrical
- Water
- Sanitary Sewer
- Natural Gas
- Telephone & Telegraph
- Communication (Radio and TV)
- Flood Control
- General Commercial
- General Industrial
- Miscellaneous
- Multi-Family Dwelling- Homeowners Association
- Multi-Family Dwelling- Condominium Unit Owner
- Gasoline Service Station
- Restaurants
- Casinos
- Acute Care Services Hospitals
- Hotels - Large Hotels - Small and Medium
- Rental – General Commercial
- Colleges and Universities

# Socioeconomic Data

- Used to weight mapping of ATC codes to land cover classes
- Using census data on employment in industry (by categories) and basic demographics
- Census categories are mapped to ATC codes (multiple apply in some cases)

# Mapping Census to ATC

## ATC Occupancy Description

Retail Trade

Wholesale Trade

Personal and Repair Services

Professional, Technical and Business Services

Health Care Service

Entertainment and Recreation

Light Fabrication and Assembly

Construction

Agriculture

Mining

General Services

Education

Electrical

Restaurants

## Census 2010 Industry Mapping

Information Transfer, Wholesale and Retail Trade

Storage and Postal

Resident and Other Services

Real Estate;

Transportation, Computer Services and Software;

Financial;

Leasing and Business Services;

International Organizations;

Scientific Research and Polytechnic Services and

Geological Prospecting

Health Care, Social Security and Social Welfare

Culture, Sports and Entertainment

Manufacturing

Construction

Agriculture

Mining

Water Conservancy, Environment and Public Facilities

Management;

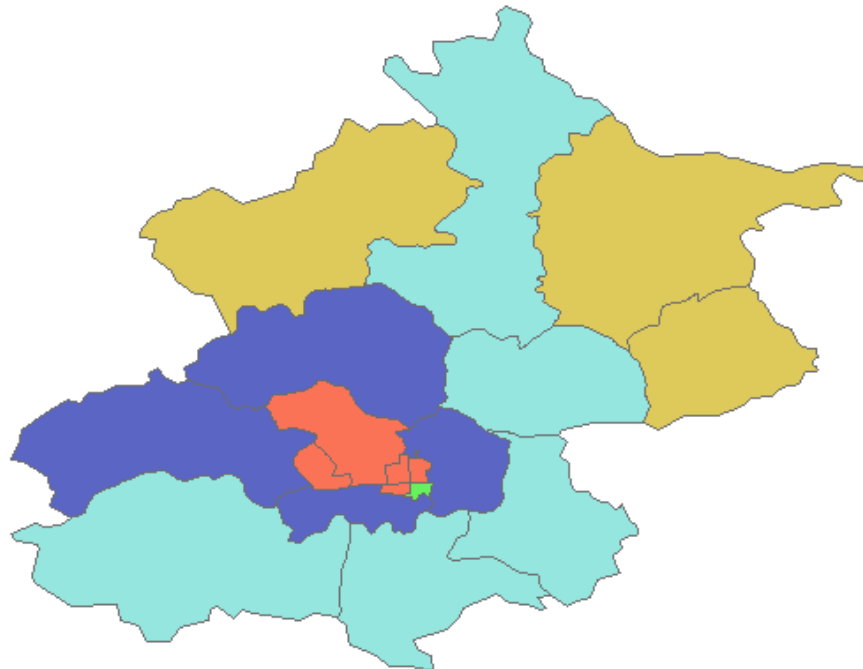
Public Administration and Social Organizations

Education

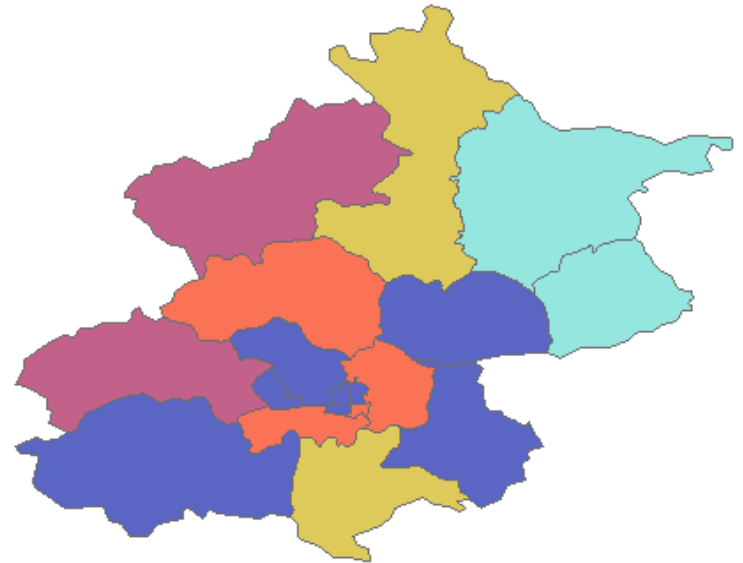
Production and Supply of Electric Power, Gas and Water

Hotels and Restaurants

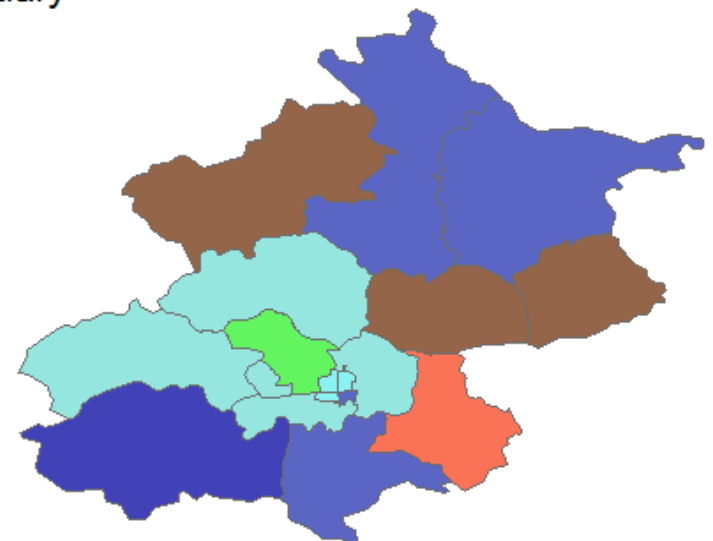
## Primary



## Secondary



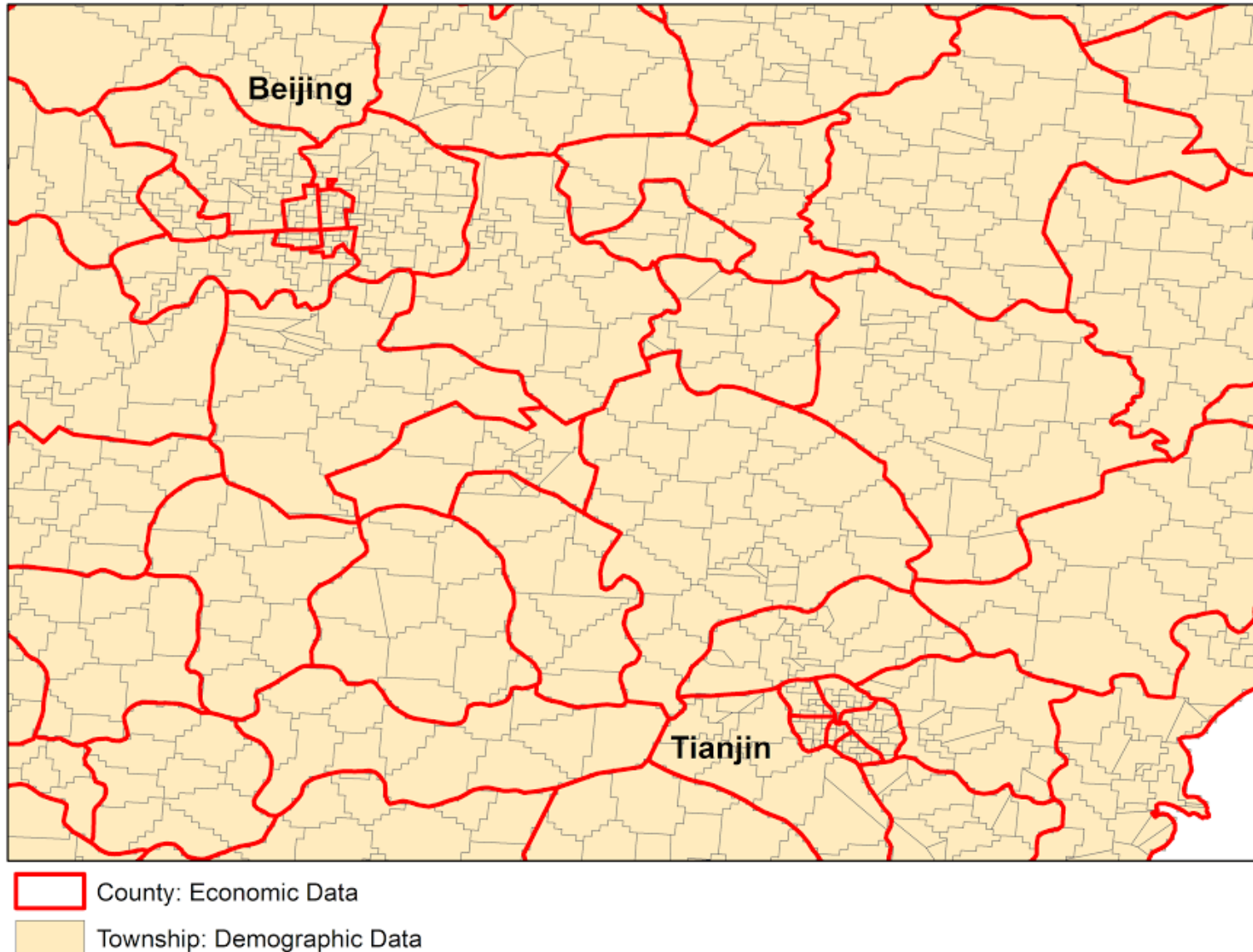
## Tertiary



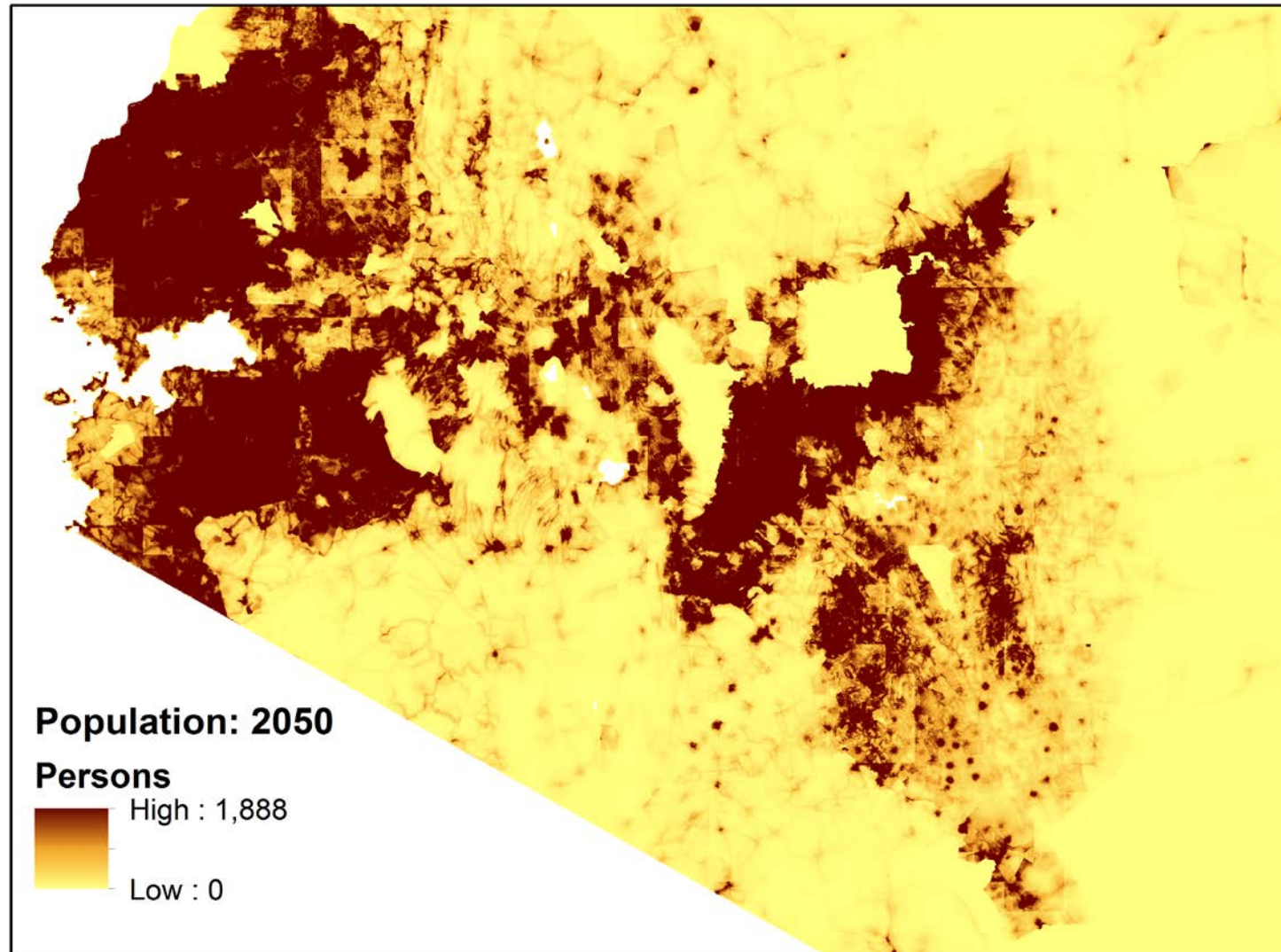
### ATC Codes

- 5 Retail Trade
- 6 Wholesale Trade
- 7 Personal & Repair Services
- 8 Prof, Tech & Business
- 13 Light Fabrication & Assembly
- 18 Construction
- 20 Agriculture
- 23 General Services
- 25 Education
- 47 Restaurants

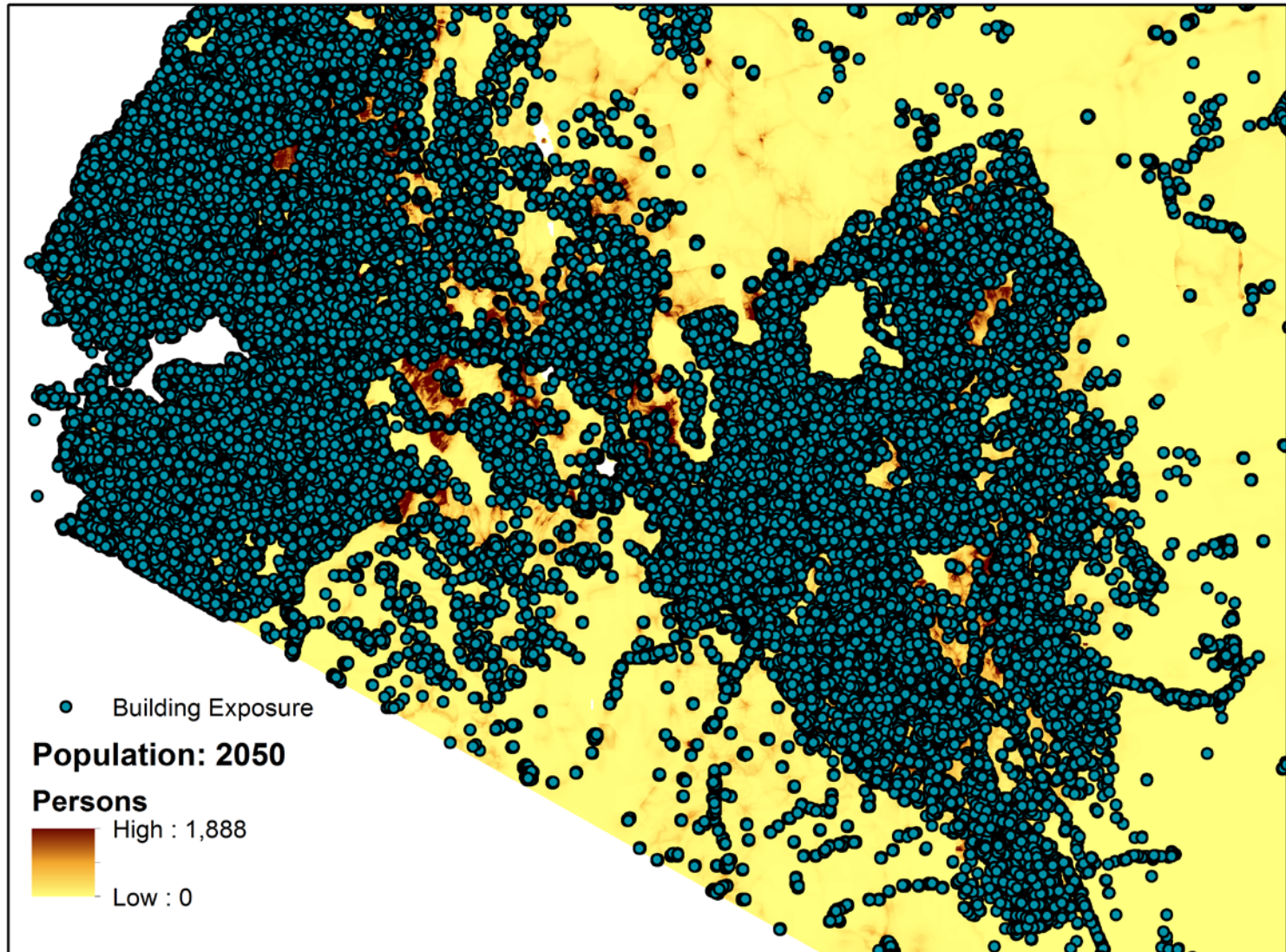
# Downscaling Census to Pixels



# Example: Population and Buildings



# Example: Population and Buildings





# Remaining Work

- Round out mapping of Census data to ATC codes
  - Use demographic census where appropriate
  - Downscale county level data to townships for China
- Complete validation
  - Merge k-means and other statistical groupings with land cover as sensitivity analysis
- Apply weights to land cover categories to produce estimates at the pixel level

# Thanks!

Questions?

[gyetman@ciesin.columbia.edu](mailto:gyetman@ciesin.columbia.edu)